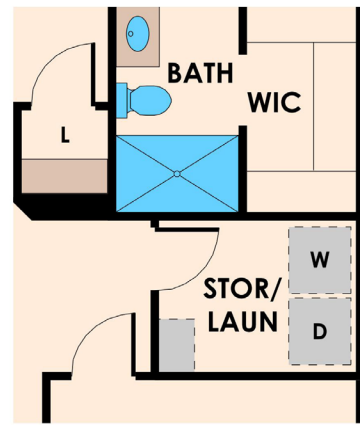
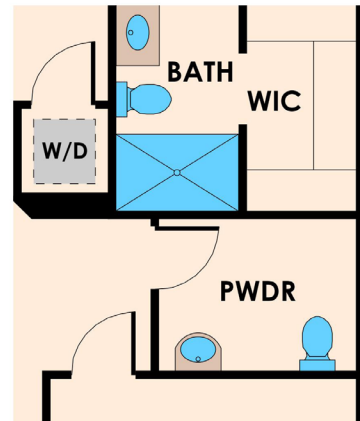


1120 sq. ft. COTTAGE HOME

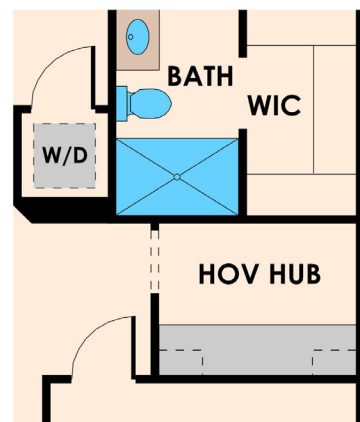
- Approximately 1,120 square feet
- Single story
- Bedrooms: 2
- Baths: 2
- Garage: 1 car oversized
- Available Options: Storage/Laundry, Powder Room, HovHub
- Fenced-in private backyard, great room/kitchen concept
- Cottage homes will be designed to look like classic cottages
- Estimated price: \$525,000 – \$535,000 (updated May 8, 2020)



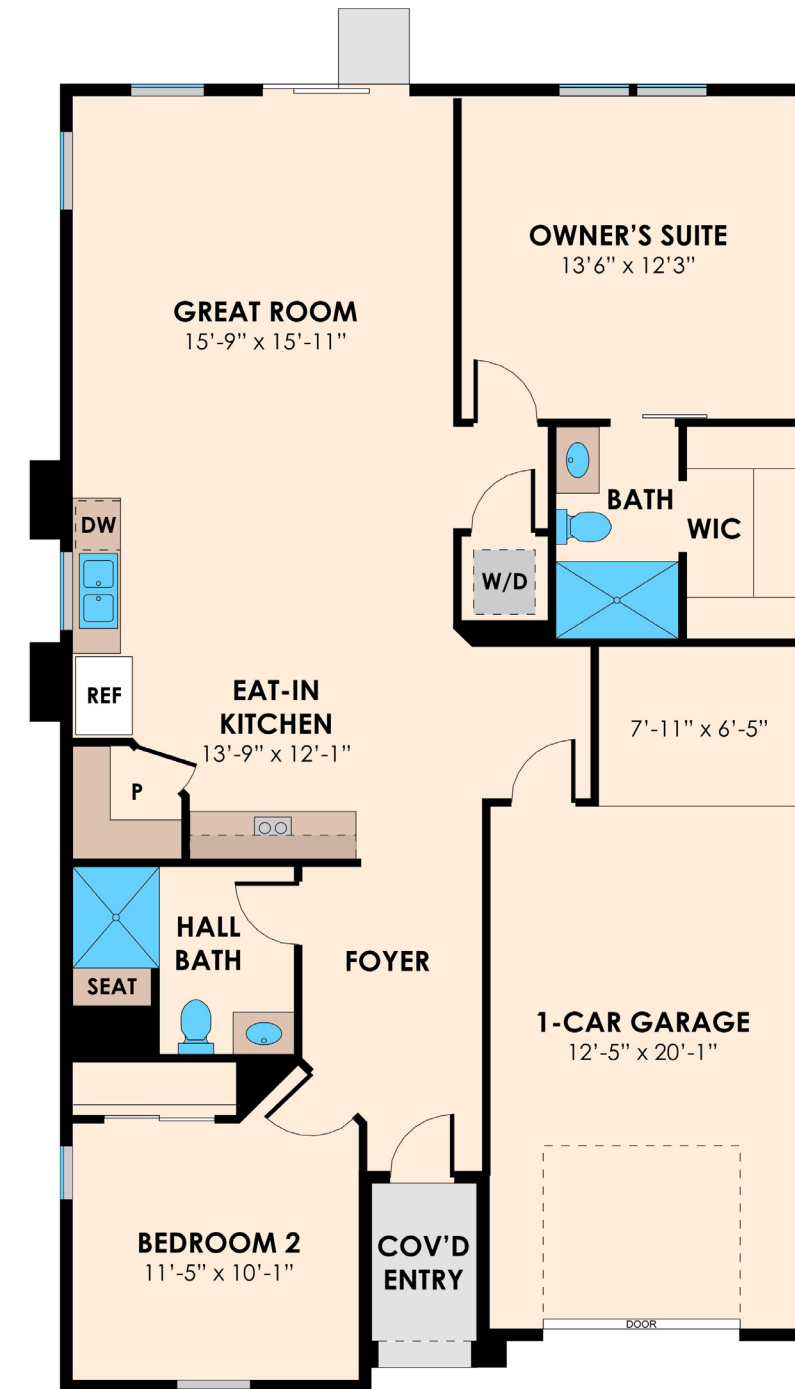
OPT. STORAGE / LAUNDRY
(+53 SQ.FT)



OPT. PWDR
(+53 SQ.FT)



OPT. HOV HUB
(+53 SQ.FT)



05.08.20



1120 SQ. FT. COTTAGE HOME
PRELIMINARY FLOORPLAN

www.BrettonWoodsDavis.com