

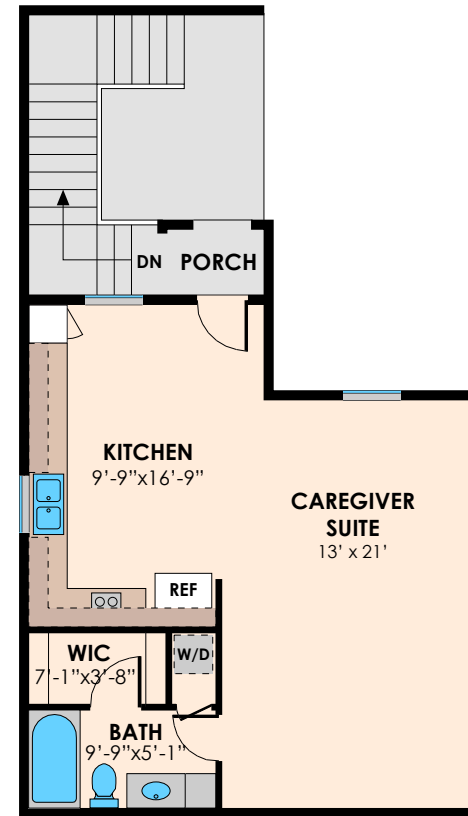
1405 sq. ft. GREENWAY HOME

- Approximately 1,450 square feet
- Single story home
- Bedrooms: 2 Master Suites
- Baths: 2.5
- Other Spaces: Small Office, 2 Courtyards, Laundry Space
- Garage: 2 car
- Available Options: Second Floor Activity Room or Caregiver Suite (see below)
- Finished floors and cabinets. Solar panels, great room kitchen combination. Private yard in rear of home, front door faces fully landscaped greenway with walking path; HOA cares for front landscaping. Side yard private patio off great room. Front patio off Greenway; similar to Bungalow and Cottage style.
- Estimated price: \$595,000 – \$625,000 (updated May 4, 2020)

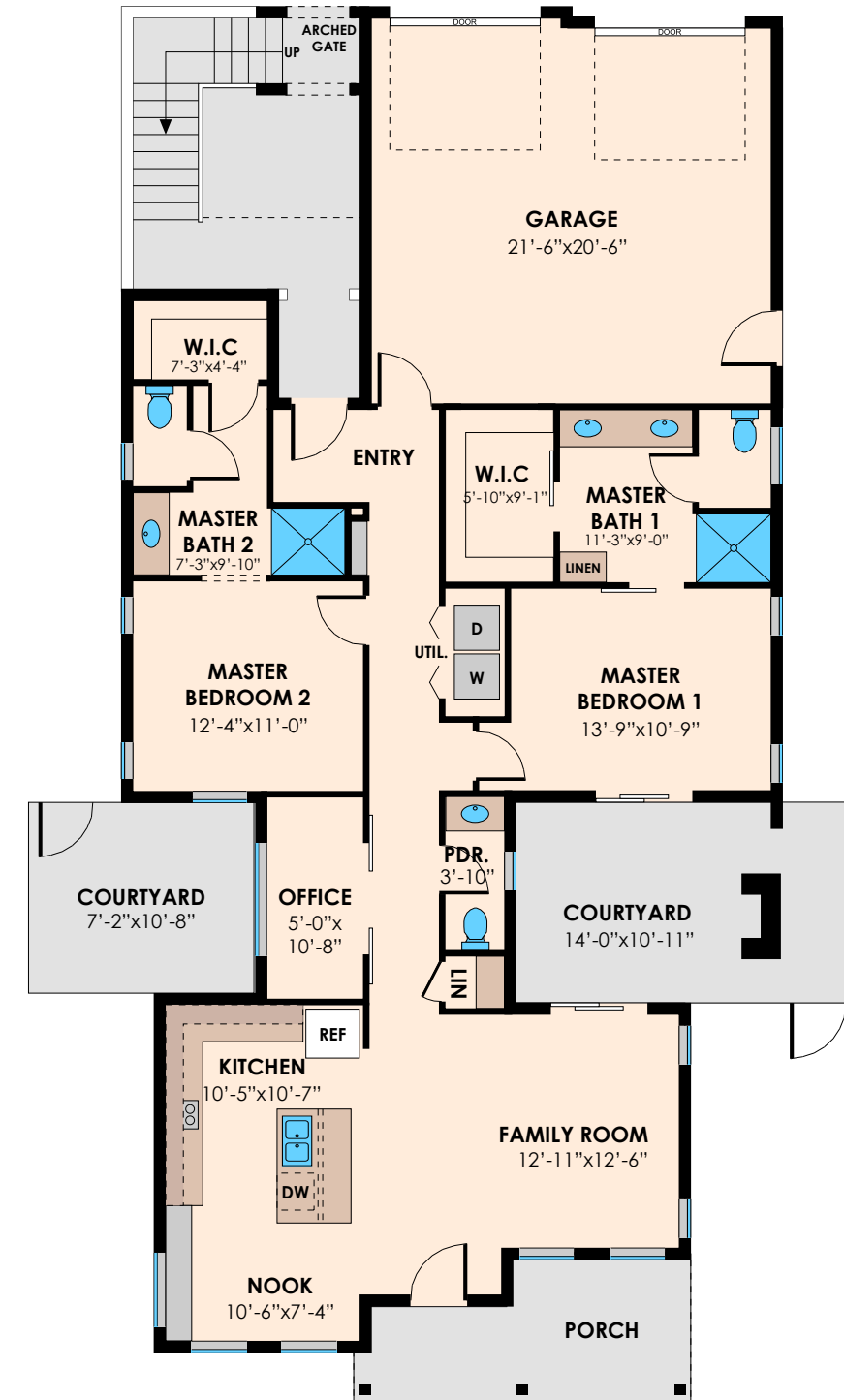
GREENWAY HOME ONLY: Caregiver Suites over garage:

Roughly 500 sq. ft.

- Finished – Estimated additional price: \$100,000+
- Shell only – Estimated additional price: \$50,000+



**OPTIONAL
CAREGIVER SUITE**



05.21.20



1405 SQ. FT. GREENWAY HOME
PRELIMINARY FLOORPLAN

www.BrettonWoodsDavis.com